

MODEL

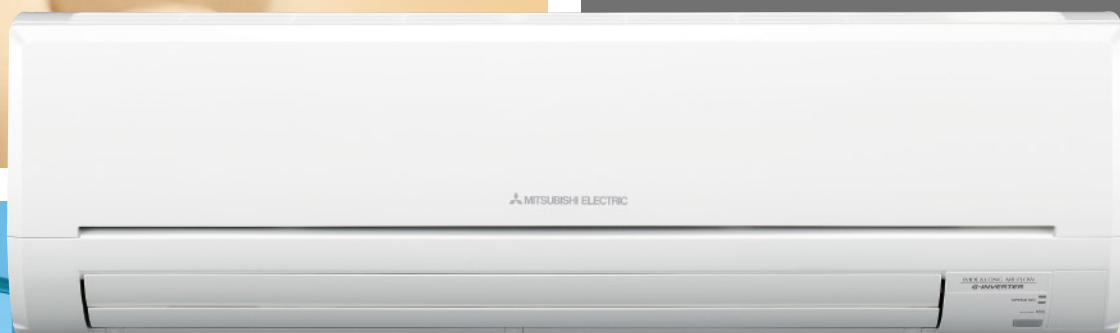
# MSZ-GE Series

**QUIET  
OPERATION**



**New  
MSZ-GE**

**60 / 71 / 80**



**HIGH  
RELIABILITY**



**ENERGY  
SAVING**



# Elegant & Stylish Design MSZ-GE

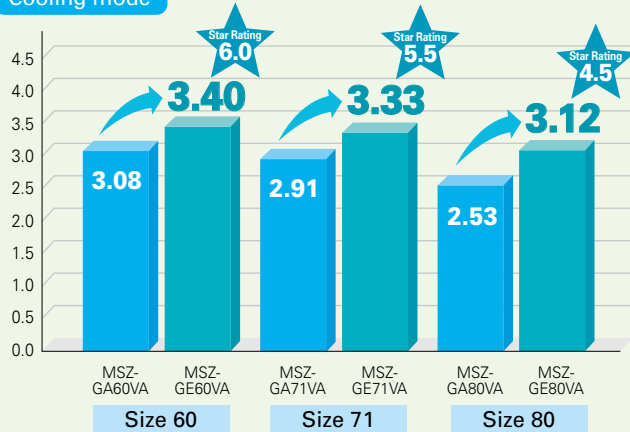
Full Product Line-up with Leading Energy-saving Technologies

## ENERGY SAVING

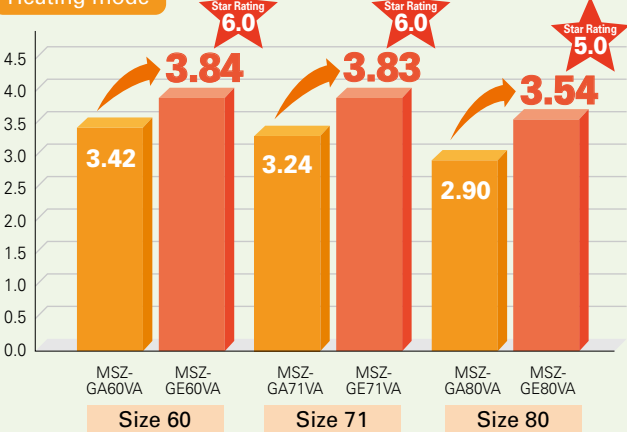
### High Energy Efficiency

All models in the series, have achieved high energy-saving star ratings. For home use, such as bedrooms and living rooms, to light commercial and office applications, our new range of air conditioners contributes to reduced energy consumption.

#### Cooling mode



#### Heating mode

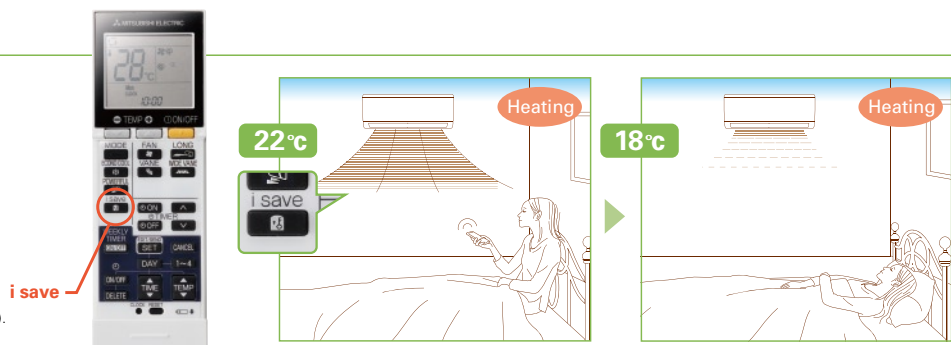


### "i save" Mode



"i save" is a simplified setting function that recalls the preferred (preset) temperature by pressing a single button on the remote controller. Press the same button twice to immediately return to the previous temperature setting. Using this function contributes to energy savings when, for example, leaving the room or going to bed.

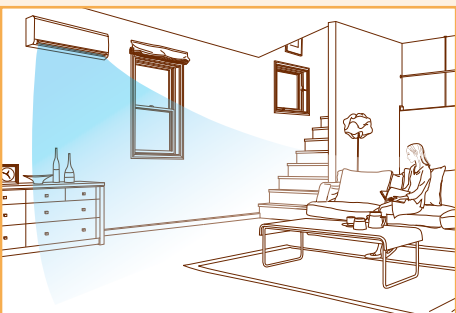
\* Temperature can be preset to 10°C when heating in the "i save" mode (except when connected to MXZ-8A140VA).



## QUIET OPERATION

### Quiet Operation

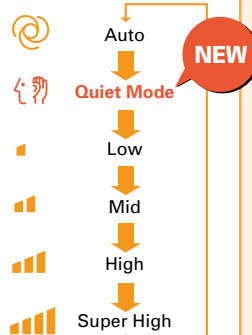
A "Quiet Mode" setting has been added to fan speed settings, ensuring quiet operation in large living areas.



#### Comparison of minimum indoor SPL (dB)

Size	60		71		80	
	Cooling	Heating	Cooling	Heating	Cooling	Heating
Series (Fan Speed)						
MSZ-GA (Low)	32	32	33	33	33	33
	3dB Less	3dB Less	3dB Less	3dB Less	3dB Less	3dB Less
MSZ-GE (Quiet)	29	29	30	30	30	30

#### Fan Speed Setting



MSZ-GE60/71/80VA



## FUNCTIONS / New Remote Controller & Nano Platinum Filter

### Built-in Weekly Timer Function

MSZ-GE 60/71/80 Series air conditioners are equipped with a weekly timer function. Easily set desired temperatures and operation start/stop times to match lifestyle patterns. Reduce wasted energy consumption by using the timer to prevent forgetting to turn off the unit and eliminate temperature setting adjustments.

#### Example Operation Pattern (Winter/Heating mode)

	Mon.	Tues.	Wed.	Thurs.	Fri.	Sat.	Sun.
6:00	ON 20°C	ON 20°C	ON 20°C	ON 20°C	ON 20°C	ON 20°C	ON 20°C
8:00	Automatically changes to high-power operation at wake-up time						
10:00	OFF	OFF	OFF	OFF	OFF	ON 18°C	ON 18°C
12:00	Automatically turned off during work hours					Midday is warmer, so the temperature is set lower	
14:00							
16:00							
18:00	ON 20°C	ON 20°C	ON 20°C	ON 20°C	ON 20°C	ON 20°C	ON 20°C
20:00	Automatically turns on, synchronized with arrival at home					Automatically raises temperature setting to match time when outside-air temperature is low	
22:00							
(during sleeping hours)	ON 18°C	ON 18°C	ON 18°C	ON 18°C	ON 18°C	ON 18°C	ON 18°C
	Automatically lowers temperature at bedtime for energy-saving operation at night						

#### Settings

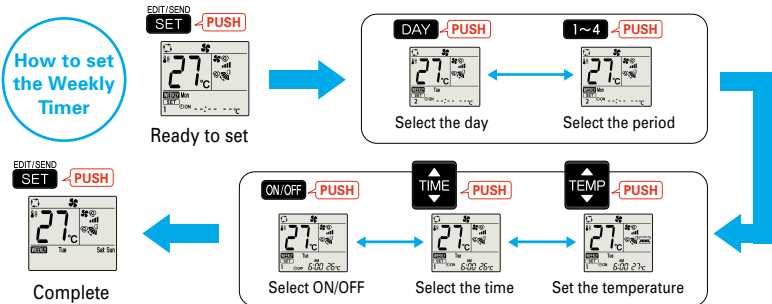
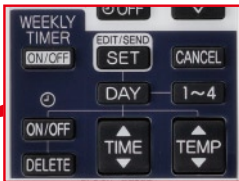
**Pattern Settings:** Input up to four settings for each day

**Settings:** • Start/Stop operation • Temperature setting \*The operation mode cannot be set.

#### Easy set-up using dedicated buttons



The remote controller is equipped with buttons that are used exclusively for setting the Weekly Timer. Setting operation patterns is easy and quick.



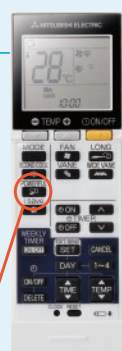
•Start by pushing the "SET" button and follow the instructions to set the desired patterns. Once all of the desired patterns are input, point the top end of the remote controller at the indoor unit and push the "SET" button one more time. (Push the "SET" button only after inputting all of the desired patterns into the remote controller memory. Pushing the "CANCEL" button will end the set-up process without sending the operation patterns to the indoor unit).

•It takes a few seconds to transmit the Weekly Timer operation patterns to the indoor unit. Please continue to point the remote controller at the indoor unit until all data has been sent.

### Powerful Mode



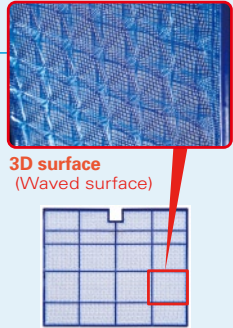
This one-touch operation mode ensures faster cooling and heating. It automatically sets the indoor unit fan at maximum speed and the outdoor unit at maximum capacity, cools/heats the room for 15 minutes, and returns the indoor and outdoor units to their regular settings.



### Nano Platinum Filter (60/71/80)



This filter incorporates nanometre-sized platinum-ceramic particles that generate stable antibacterial and deodourising effects. The size of the three-dimensional surface has been increased as well, enlarging the filter capture area. These features give the Nano Platinum Filter of the MSZ-GE60/71/80 models better dust collection performance than conventional filters. The superior air-cleaning effectiveness increases room comfort yet another level.



\*Filter can be washed with water (air-cleaning effect is maintained)

# Specifications HEAT PUMP

Type				Inverter Heat Pump		
Indoor Unit				MSZ-GE60VA	MSZ-GE71VA	MSZ-GE80VA
Outdoor Unit				MUZ-GE60VA	MUZ-GE71VA	MUZ-GE80VA
Power Supply	Source			Outdoor		
	V/Phase/Hz			230, Single, 50		
Cooling	Capacity	Rated	kW	6.0	7.1	8.0
		Min - Max	kW	1.5 - 7.5	2.4 - 8.7	2.4 - 9.2
	Total Input		kW	1.760	2.130	2.560
	EER			3.4	3.33	3.12
		Star Rating		6.0	5.5	4.5
	Sound Pressure Level	Indoor Unit [Quiet-Low-Mid-Hi-SHi*]	dB(A)	29-37-41-45-49	30-37-41-45-49	30-37-41-45-49
		Outdoor Unit [Rated]	dB(A)	55	55	55
	Sound Power Level	Outdoor Unit [Rated]	dB(A)	69	69	69
	Air Volume	Indoor Unit [Quiet-Low-Mid-Hi-SHi*]	L/S	163-190-225-262-305	162-192-222-257-298	162-192-222-257-298
Outdoor Unit [Rated]		L/S	682	835	920	
Heating	Capacity	Rated	kW	6.8	8.1	9.0
		Min - Max	kW	2.0 - 9.3	2.2 - 9.9	2.2 - 11.1
	Total Input		kW	1.770	2.110	2.540
	COP			3.84	3.83	3.54
		Star Rating		6.0	6.0	5.0
	Sound Pressure Level	Indoor Unit [Quiet-Low-Mid-Hi-SHi*]	dB(A)	29-37-41-45-49	30-37-41-45-49	30-37-41-45-49
		Outdoor Unit [Rated]	dB(A)	55	55	55
	Sound Power Level	Outdoor Unit [Rated]	dB(A)	69	69	69
	Air Volume	Indoor Unit [Quiet-Low-Mid-Hi-SHi*]	L/S	163-190-225-262-305	170-192-222-257-298	170-192-222-257-298
Outdoor Unit [Rated]		L/S	820	803	803	
Operating Current (max.)				14.5	16.6	16.6
Indoor Unit	Input	Rated	kW	0.061	0.065	0.065
	Operating Current (max.)		A	0.52	0.55	0.55
	Dimensions	H - W - D	mm	325 - 1100 - 238	325 - 1100 - 238	325 - 1100 - 238
	Weight		kg	16	16	16
Outdoor Unit	Dimensions	H - W - D	mm	880 - 840 - 330	880 - 840 - 330	880 - 840 - 330
	Weight		kg	50	53	53
	Operating Current (max.)		A	7.46	8.95	10.75
	Breaker Size		A	20	20	20
Ext. Piping	Diameter	Liquid ( ø ) / Gas	mm	6.35 / 15.88	9.52 / 15.88	9.52 / 15.88
	Max. Length		m	30	30	30
	Max. Height		m	15	15	15
Guaranteed Operating Range [Outdoor]		Cooling	°C	-10 ~ +46	-10 ~ +46	-10 ~ +46
		Heating	°C	-15 ~ +24	-15 ~ +24	-15 ~ +24

\*SHi: Super High



## Optional Parts

Part Name	Part No.	Compatible Models
Electrostatic Anti-allergy Enzyme Filter	<b>MAC-2310FT</b>	MSZ-GE60/71/80VA
Quick Clean Kit	<b>MAC-093SS-E</b>	MSZ-GE60/71/80VA
MA & Contact Terminal Interface	<b>MAC-397IF-E</b>	MSZ-GE60/71/80VA
M-NET Interface	<b>MAC-399IF-E</b>	MSZ-GE60/71/80VA
Centralised On/Off Remote Controller	<b>MAC-821SC-E *</b>	MSZ-GE60/71/80VA
Wired Remote Controller	<b>PAR-21MAA-J *</b>	MSZ-GE60/71/80VA
Air Outlet Guide	<b>MAC-889SG-E</b>	MUZ-GE60/71/80VA

\*MAC-397IF-E is required.

## Outdoor Unit



MUZ-GE60/71/80

Products in this brochure contain R410A refrigerant. Please refer to installation instructions before installation or servicing of the product. Only licenced persons and companies qualified and experienced in the installation, service and repair of products containing refrigerants should be permitted to do so. The buyer must ensure that the person and/or company who is to install, service or repair the air conditioner has the necessary licences, qualifications and experience to perform the work. Suitable access for warranty and service is required. Refer to conditions of warranty on the Mitsubishi Electric website. Product improvements, specifications, design revisions and availability are subject to change without notice. Please check with your nearest dealer.



Certificate Number  
49385



Certificate Number  
EC97J1132

Mitsubishi Electric Shizuoka Works acquired ISO9001 certification under Series 9000 of the International Standard Organization (ISO) based on a review of quality warranties for the production of air conditioning equipment. The plant also acquired environmental management system standard ISO 14001 certification.



**MITSUBISHI ELECTRIC CORPORATION**  
HEAD OFFICE: TOKYO BLDG., 2-7-3, MARUNOUCHI, CHIYODA-KU, TOKYO 100-8310, JAPAN

## MITSUBISHI ELECTRIC AUSTRALIA PTY LTD.

www.mitsubishielectric.com.au (Incorporated in New South Wales) ABN 58 001 215 792

### New South Wales

348 Victoria Road,  
Rydalmere NSW 2116  
Phone 02 9684 7555  
Fax 02 9898 1043

### Victoria/Tasmania

Omnico Business Park  
Building 28  
270 Ferntree Gully Road  
Notting Hill VIC 3168  
Phone 03 9535 7800  
Fax 03 9535 7801

### Queensland/ Northern Territory

Unit 12,  
469 Nudgee Road  
Hendra QLD 4011  
Phone 07 3623 2000  
Fax 07 3630 1888

### South Australia

77 Port Road,  
Hindmarsh SA 5007  
Phone 08 8340 2000  
Fax 08 8340 0555

### Western Australia

Unit 5,  
329 Collier Road  
Bassendean WA 6054  
Phone 08 9377 3400  
Fax 08 9377 3499