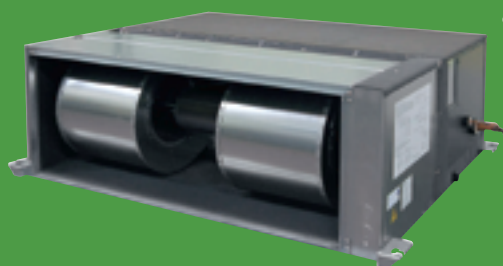


# PEA SERIES



PEA-RP140/170/200WJA

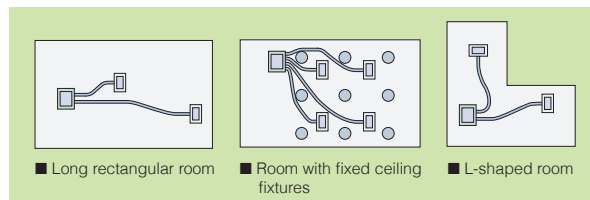


optional

For elegance and style, the PEA series compliments the room environment with aesthetically pleasing ceiling installation and a vast line-up of performance functions.

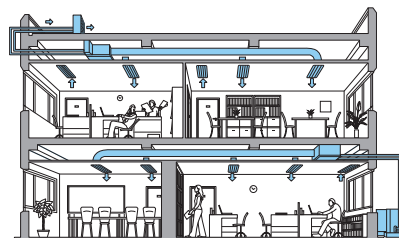
## Freedom in Installation

Versatile and easy installation is possible; for example, it is possible to adjust the distance between the air-intake and air-outlet vents to create the optimal airflow configuration.



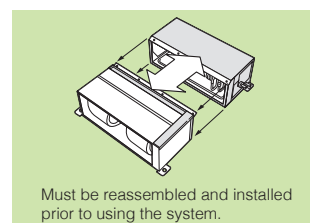
## Flexible Duct Design Enables Use of High-pressure Static Fan

A flexible duct design and 150Pa external static high-pressure are incorporated. The increased variation in airflow options ensures operation that best matches virtually all room layouts.



## Easier Handling

The new ducted fan coil unit (PEA-RP140/170/200WJA) now has a two-piece construction. This allows separation of the indoor unit heat exchanger and the fan deck assembly for easier handling into the roof space.



## Computerised Dehumidification

The fan speed is controlled electronically in dehumidifying mode, increasing the range and efficiency of dehumidification.

Specifications: Ceiling-concealed (PEA)

| Indoor unit                 |        | PEA-RP140WJA   |                 | PEA-RP170WJA     |                 | PEA-RP200WJA     |                 |
|-----------------------------|--------|--|-----------------|------------------|-----------------|------------------|-----------------|
| Outdoor unit                |        | PUHZ-RP140V/YKA2                                       |                 | PUHZ-RP170V/YKA2 |                 | PUHZ-RP200V/YKA2 |                 |
| Function                    |        | Cooling  | Heating         | Cooling          | Heating         | Cooling          | Heating         |
| Capacity (min.-max.)        | (kW)   | 14.0 (6.2-15.3)  | 16.0 (5.7-18.0) | 16.0 (9.0-20.0)  | 20.0 (9.5-22.4) | 18.9 (9.0-22.4)  | 22.4 (9.5-25.0) |
| Input                       | (kW)   | 4.35   | 4.04            | 5.00             | 6.00            | 5.92             | 6.89            |
| Rated EER/COP*1             |        | 3.22   | 3.96            | 3.20             | 3.33            | 3.19             | 3.25            |
| Rated AEER/ACOP             |        | 3.12/3.10  | 3.76/3.73       | 3.16/3.11        | 3.22/3.18       | 3.04             | 3.12            |
| AEER/ACOP (part-load %)*2   |        |  |                 |                  |                 | 3.71             |                 |
| Indoor unit                 |        | PEA-RP140WJA   |                 | PEA-RP170WJA     |                 | PEA-RP200WJA     |                 |
| Power supply                |        | V: Single-phase, 50Hz, 230V Y: Three-phase, 50Hz, 400V |                 |                  |                 |                  |                 |
| Airflow                     | CMM    | 50-61-72   |                 |                  |                 |                  |                 |
|                             | L/S    | 833-1,017-1,200  |                 |                  |                 |                  |                 |
| External static pressure Pa |        | 60/75/100/150  |                 |                  |                 |                  |                 |
| Sound pressure level*3      | (dB)   | 38-41-44   |                 |                  |                 |                  |                 |
| Return air spigot size      | (mm)   | 1,100×420  |                 |                  |                 |                  |                 |
| Supply air spigot size      | (mm)   | 1,100×340  |                 |                  |                 |                  |                 |
| Dimensions                  | Height | (mm)   | 470             |                  |                 |                  |                 |
|                             | Width  | (mm)   | 1,370           |                  |                 |                  |                 |
|                             | Depth  | (mm)   | 1,120           |                  |                 |                  |                 |
| Weight                      |        | (kg)   | 108             |                  |                 |                  |                 |

\*1 Rated EER/COP for PEA-RP170/200WJA are measured at ESP 75 Pa.

\*2 MEPS compliant at part load

\*3 Sound pressure level for PEA-RP140/170/200WJA are measured in anechoic chamber at ESP 150 Pa.